

# Driving Safety Transformation: How Rockline Industries Leveraged Data-Driven Insights for Success



**rockline**®

A family-owned company, Rockline Industries is one of the world's largest manufacturers of coffee filters, baking cups, and consumer, health care, industrial and institutional wet wipes.

Rockline employs approximately 2,500 people worldwide and has manufacturing facilities in Wisconsin, Arkansas, New Jersey, Tennessee, England and South China.

Rockline Industries partnered with Vector Solutions to implement incident, inspection, observation, and corrective action reporting, with the goal of developing well-informed strategies to improve safety throughout its operations.

## The Challenge

Rockline wanted a better system for employees to record and share safety concerns identified through its behavioral based safety and monthly inspection programs.

Rockline desired a safety management software to streamline the collection and analysis of this fragmented safety data.



## The Choice

In conjunction with the Vector Solutions team, Rockline configured Vector EHS Management software modules to allow for easy reporting and analytics of its safety data.

## The Change

Since the implementation of Vector EHS, Rockline Industries has improved management of their EHS data by:



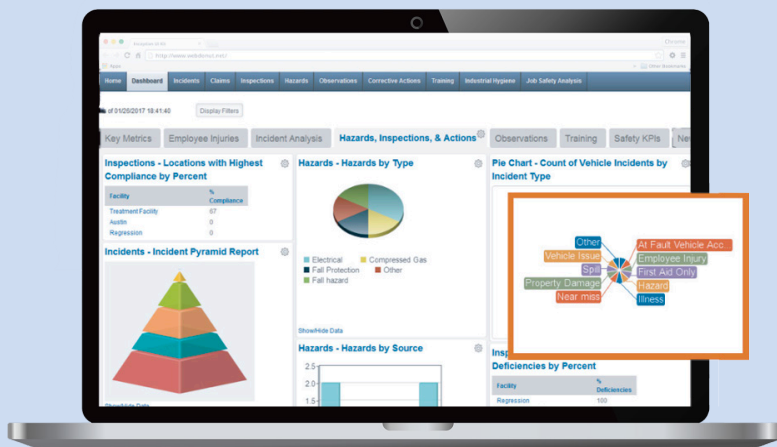
Accessing safety data in an online centralized database allowing for quick retrieval and analysis.



Improving metric calculations across divisions, locations, business groups.



Enhancing their ability to provide frontline employees a method of recording safe and unsafe acts and conditions in the workplace.



### Modules Utilized

- Incidents
- Inspections
- Observations
- Job Safety Analysis
- Corrective Actions
- Dashboards



**“A cornerstone of our world-class safety program is our attention to even minor incidents and our investigation of all potential safety issues.**

**The data we pull from Vector’s dashboards and reports is an invaluable part of this process, and helps us make adjustments to how we work to continuously improve safety.”**

Bill Scheidt  
HS&E Manager, Rockline Industries